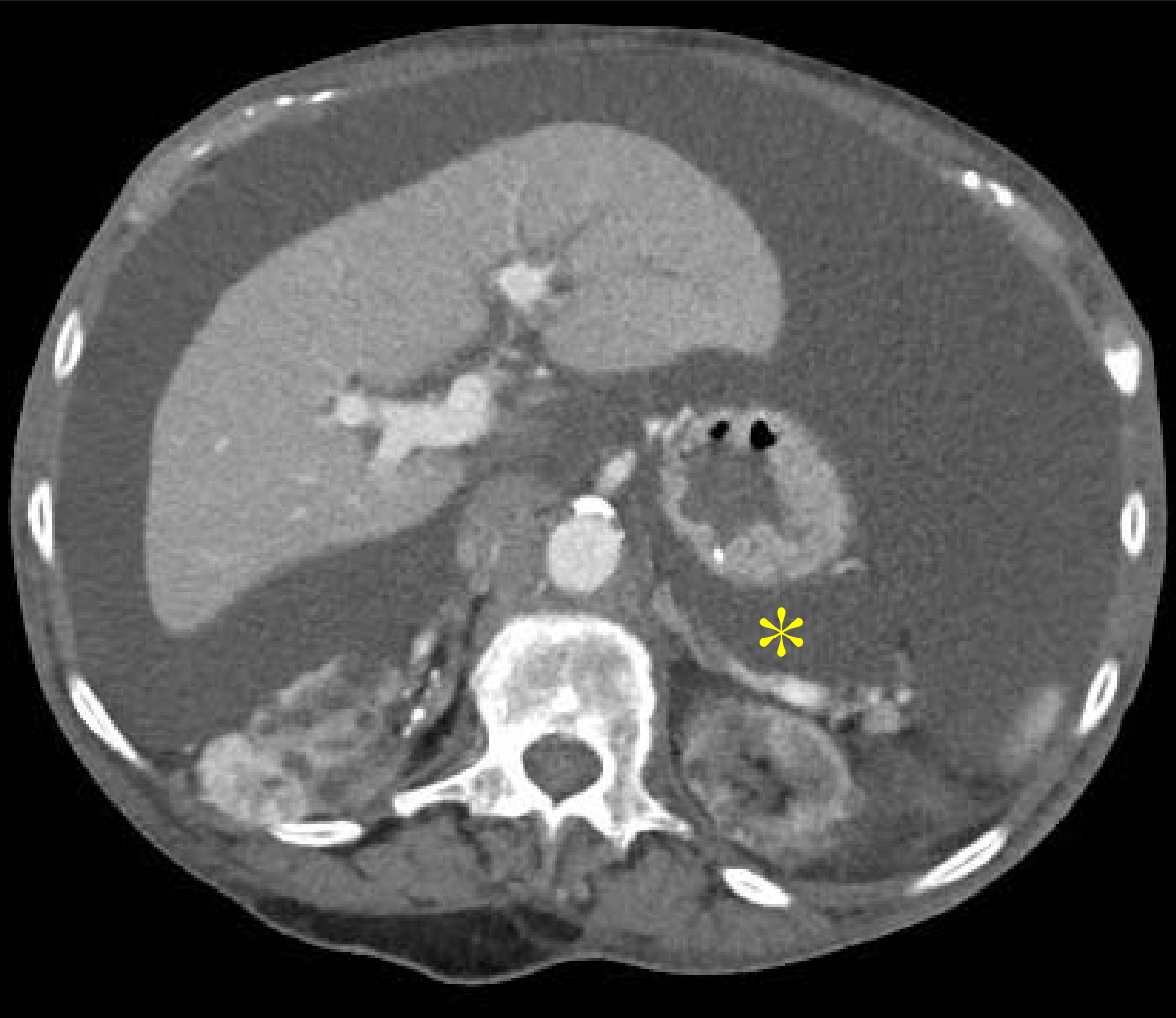
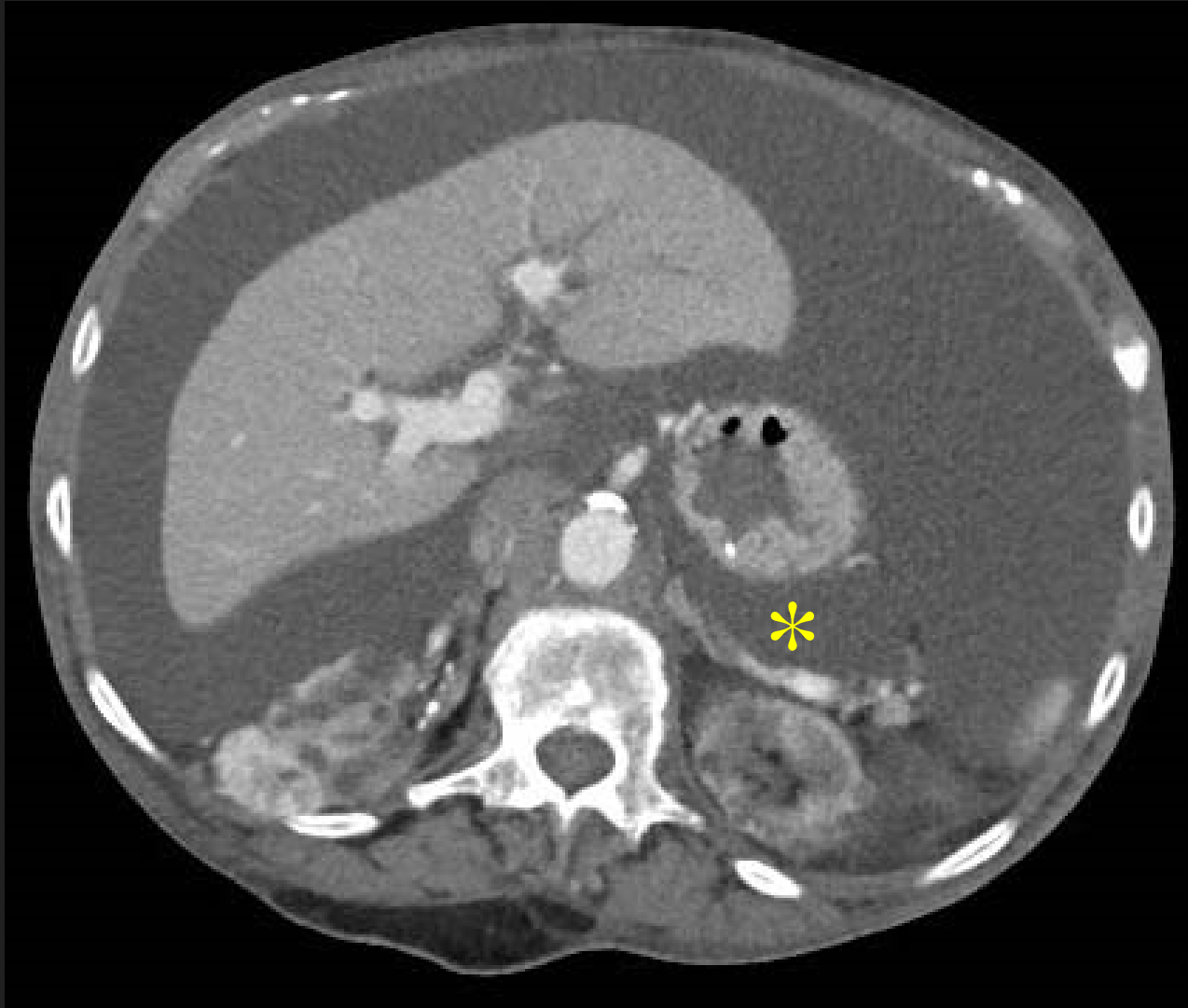


1. Name the space labeled with the asterisk.



1. Name the space labeled with the asterisk.
 - A. Pararenal
 - B. Lesser sac
 - C. Perirenal
 - D. Greater sac



1. Name the space labeled with the asterisk.
 - A. Pararenal
 - B. Lesser sac
 - C. Perirenal
 - D. Greater sac

Answer is B
Objective 13.5

The labeled structure is the lesser sac.



2. What is the name of the artery (arrow) displaced by the inguinal hernia?



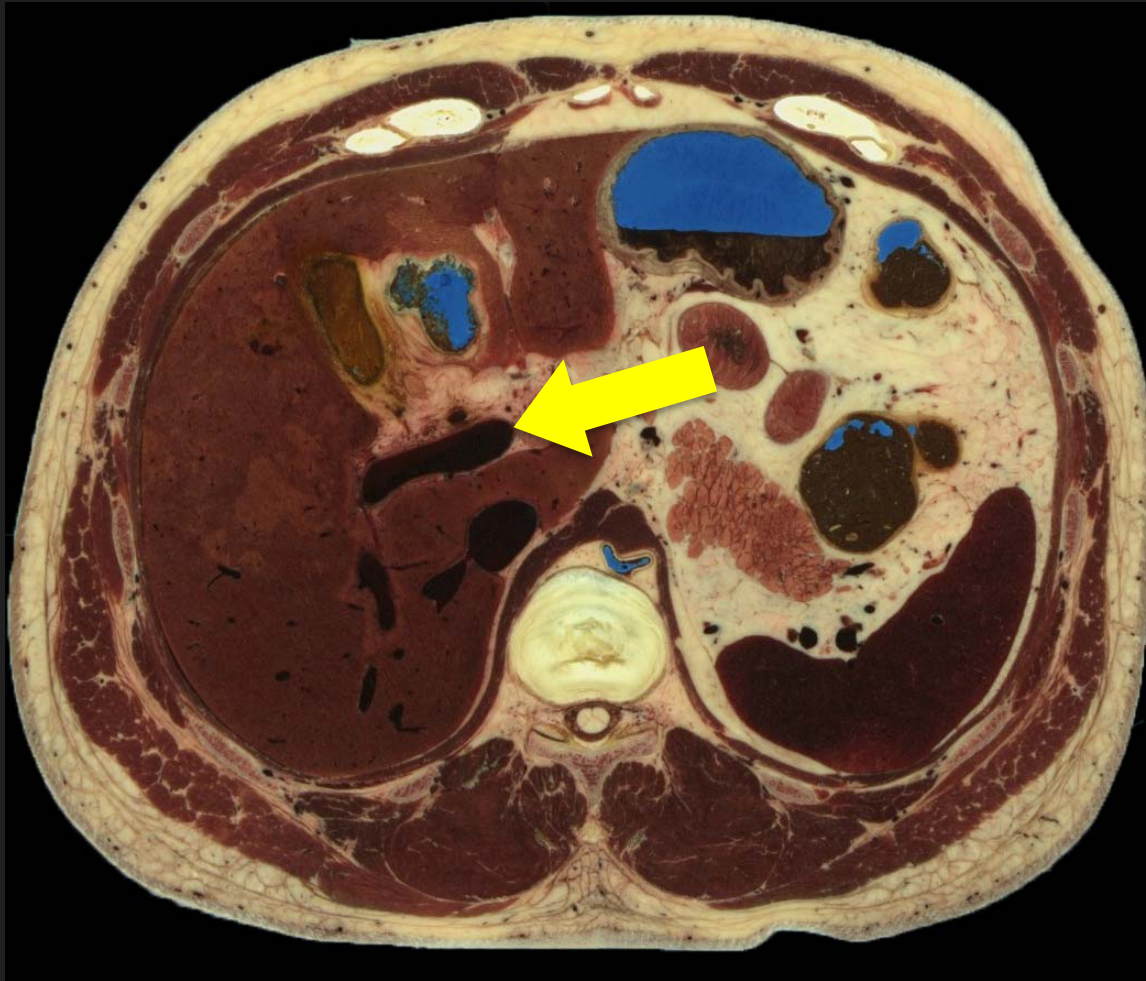
2. What is the name of the artery (arrow) displaced by the inguinal hernia?
- A. Deep circumflex iliac
 - B. Inferior epigastric
 - C. Superficial femoral
 - D. Obturator



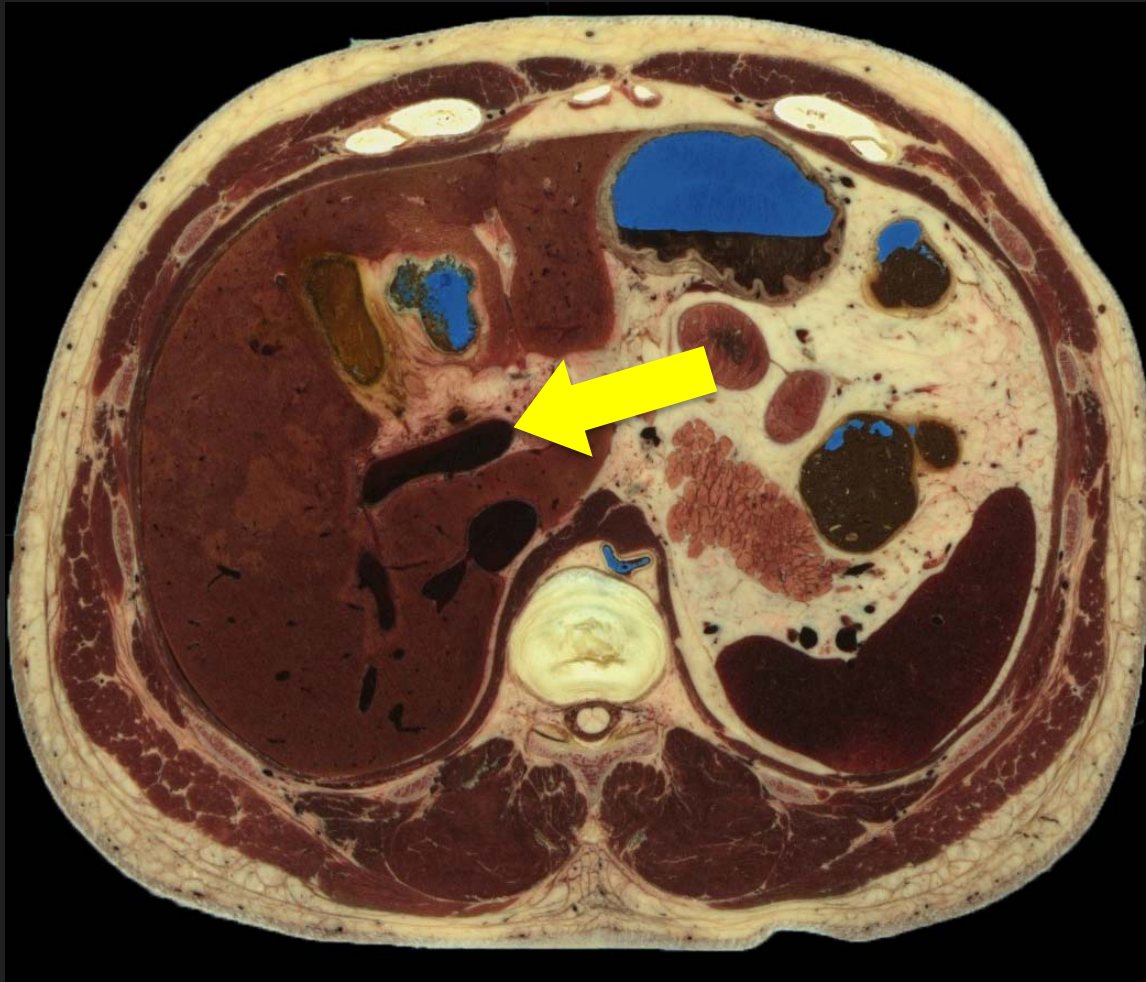
2. What is the name of the artery (arrow) displaced by the inguinal hernia?
- A. Deep circumflex iliac
 - B. Inferior epigastric
 - C. Superficial femoral
 - D. Obturator

Answer is B
Objective 13.2

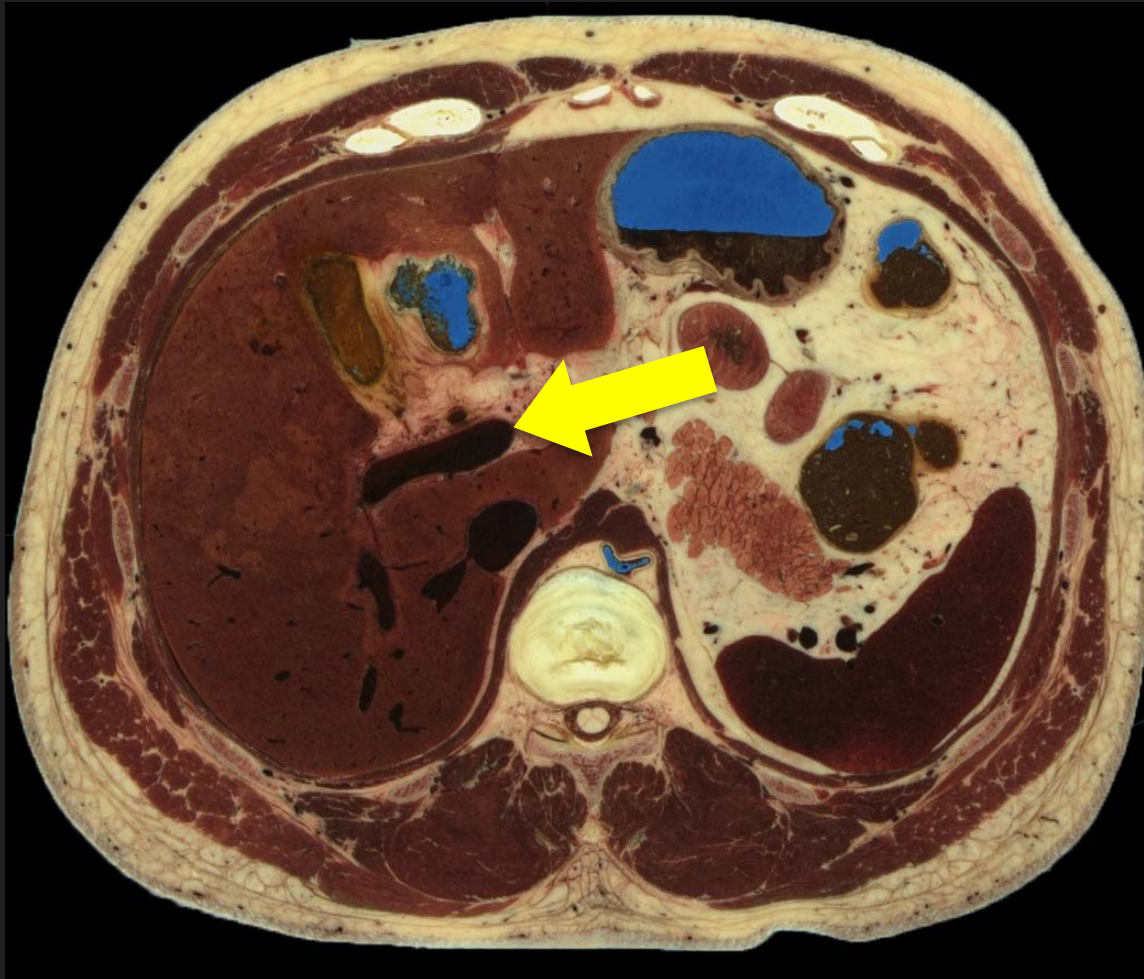
The arrowed structure is the left inferior epigastric artery.



3. Name the fluid transported by and the direction of flow within the arrowed structure.



3. Name the fluid transported by and the direction of flow within the arrowed structure.
- A. Bile, from liver to duodenum
 - B. Blood, from liver to right atrium
 - C. Blood, from aorta to liver
 - D. Blood, from bowel to liver



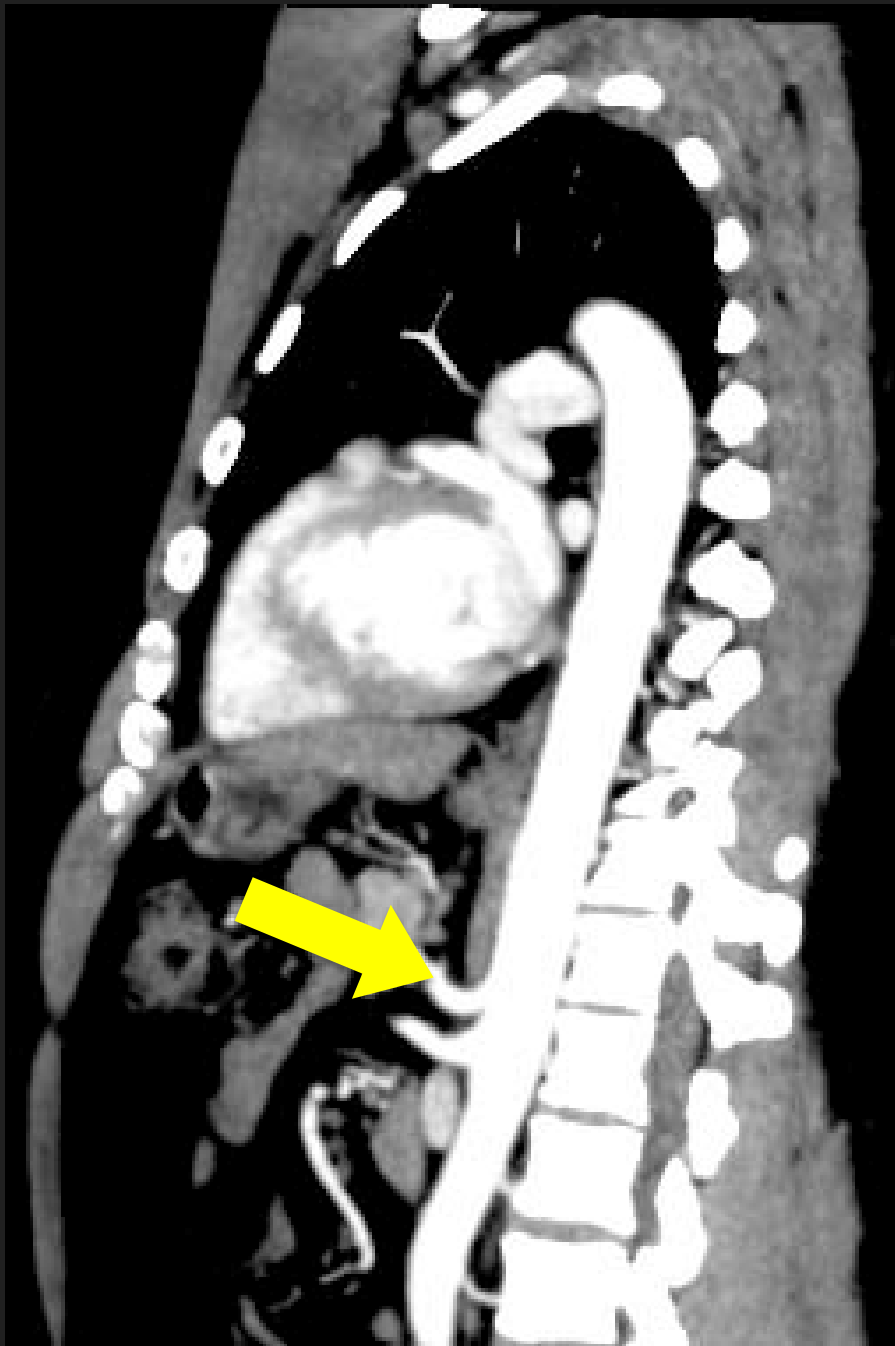
3. Name the fluid transported by and the direction of flow within the arrowed structure.
- A. Bile, from liver to duodenum
 - B. Blood, from liver to right atrium
 - C. Blood, from aorta to liver
 - D. Blood, from bowel to liver

Answer is D
Objectives 14.1, 14.2
and 14.3

The arrowed structure is the portal vein.



4. Name the arrowed structure on this sagittal CT reconstruction of the chest and upper abdomen.



4. Name the arrowed structure on this sagittal CT reconstruction of the chest and upper abdomen.
- A. Celiac axis
 - B. Superior mesenteric artery
 - C. Superior mesenteric vein
 - D. Splenic vein



4. Name the arrowed structure on this sagittal CT reconstruction of the chest and upper abdomen.
- A. Celiac axis
 - B. Superior mesenteric artery
 - C. Superior mesenteric vein
 - D. Splenic vein

Answer is A
Objectives 14.2
and 14.3

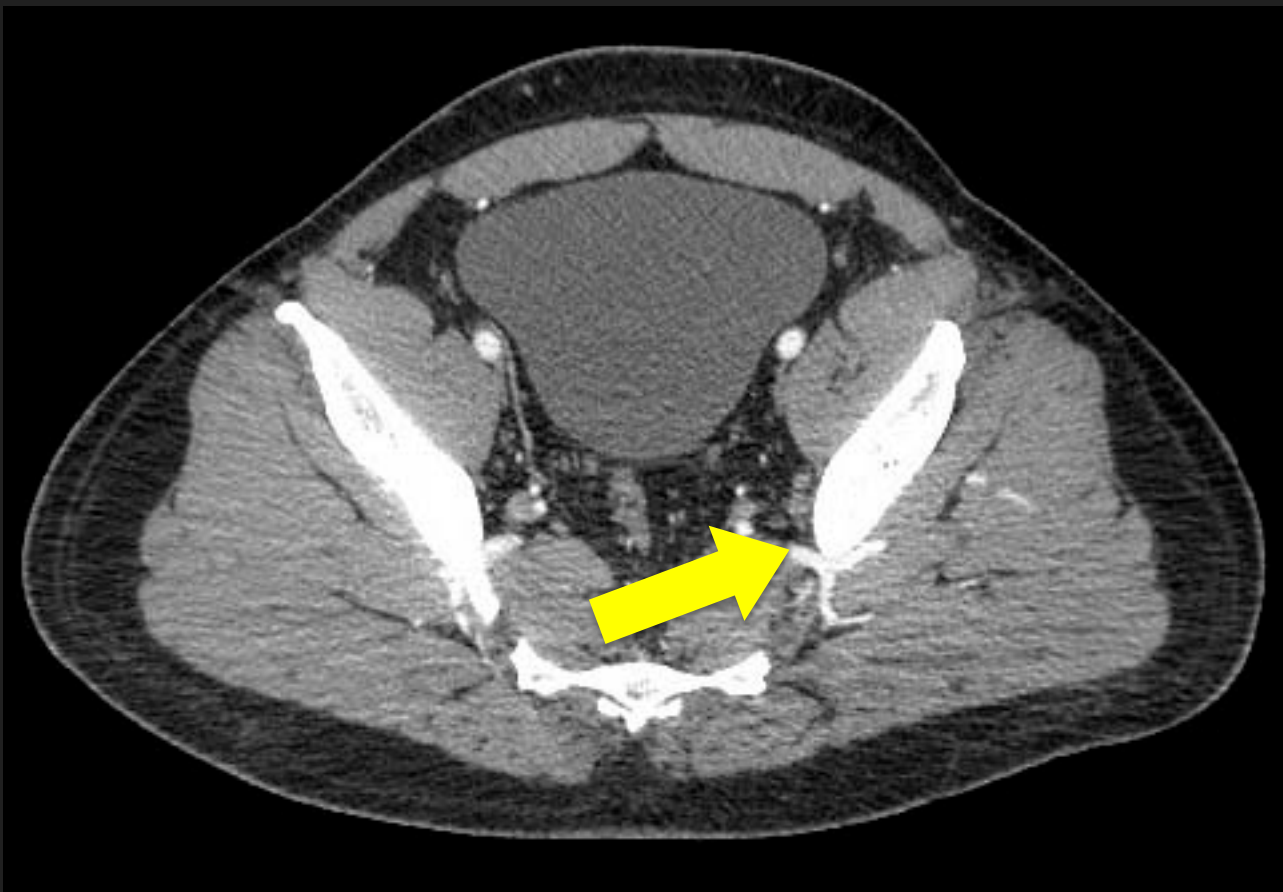
The arrowed structure is the celiac axis.



5. Name the arrowed artery.



5. Name the arrowed artery.
- A. Superior gluteal
 - B. Obturator
 - C. Inferior gluteal
 - D. Internal pudendal



5. Name the arrowed artery.
- A. Superior gluteal
 - B. Obturator
 - C. Inferior gluteal
 - D. Internal pudendal

Answer is A
Objective 15.4

The arrowed structure is the Superior gluteal artery.



6. Name the arrowed muscle.



6. Name the arrowed muscle.
- A. Levator ani
 - B. Coccygeus
 - C. Piriformis
 - D. Obturator internus



6. Name the arrowed muscle.
- A. Levator ani
 - B. Coccygeus
 - C. Piriformis
 - D. Obturator internus

Answer is D
Objective 15.3

The arrowed structure is the Obturator internus muscle.